



The **Fred Hollows**
Foundation NZ





Our Vision:

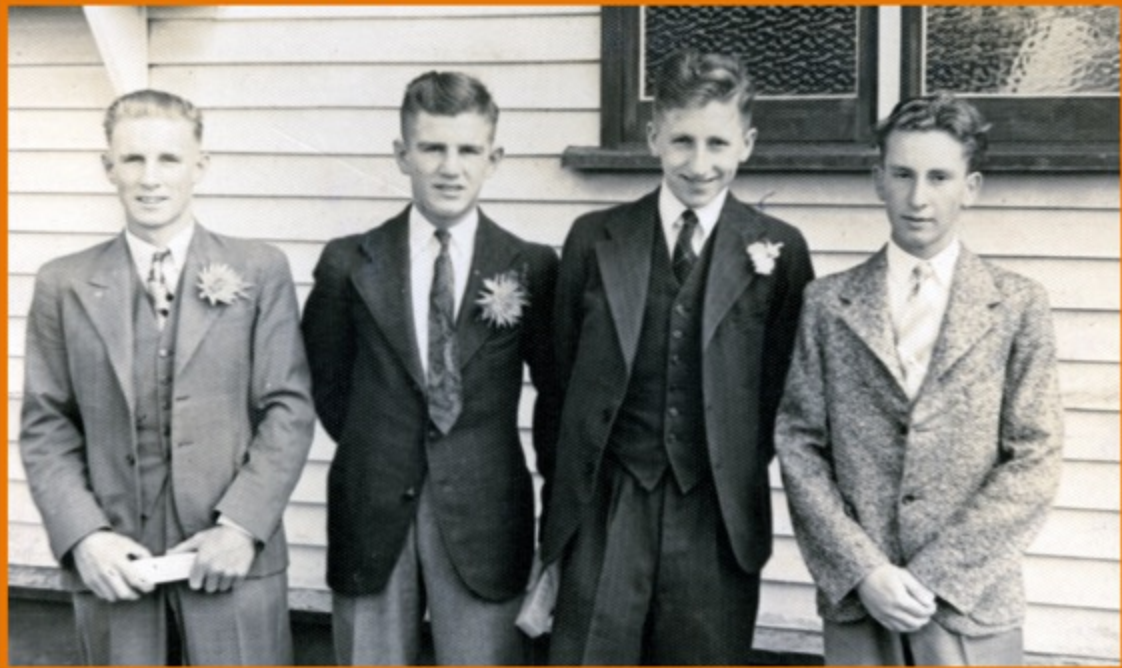
A world in which no person is needlessly blind or vision impaired.

**“It’s obscene to let
people go blind
when they don’t
have to.”**

- Professor Fred Hollows



Fred Hollows is born on 9 April 1929 in Dunedin.
He is one of four boys.



He attends Palmerston North Boys High School.

He takes a summer job working in a mental health hospital in Porirua.



Fred studies at Victoria University of Wellington.



Fred first meets Edmund Hilary on a climb.

Fred is appointed Associate Professor of Ophthalmology at the University of New South Wales in Australia.



Fred begins his work with Aboriginal communities.





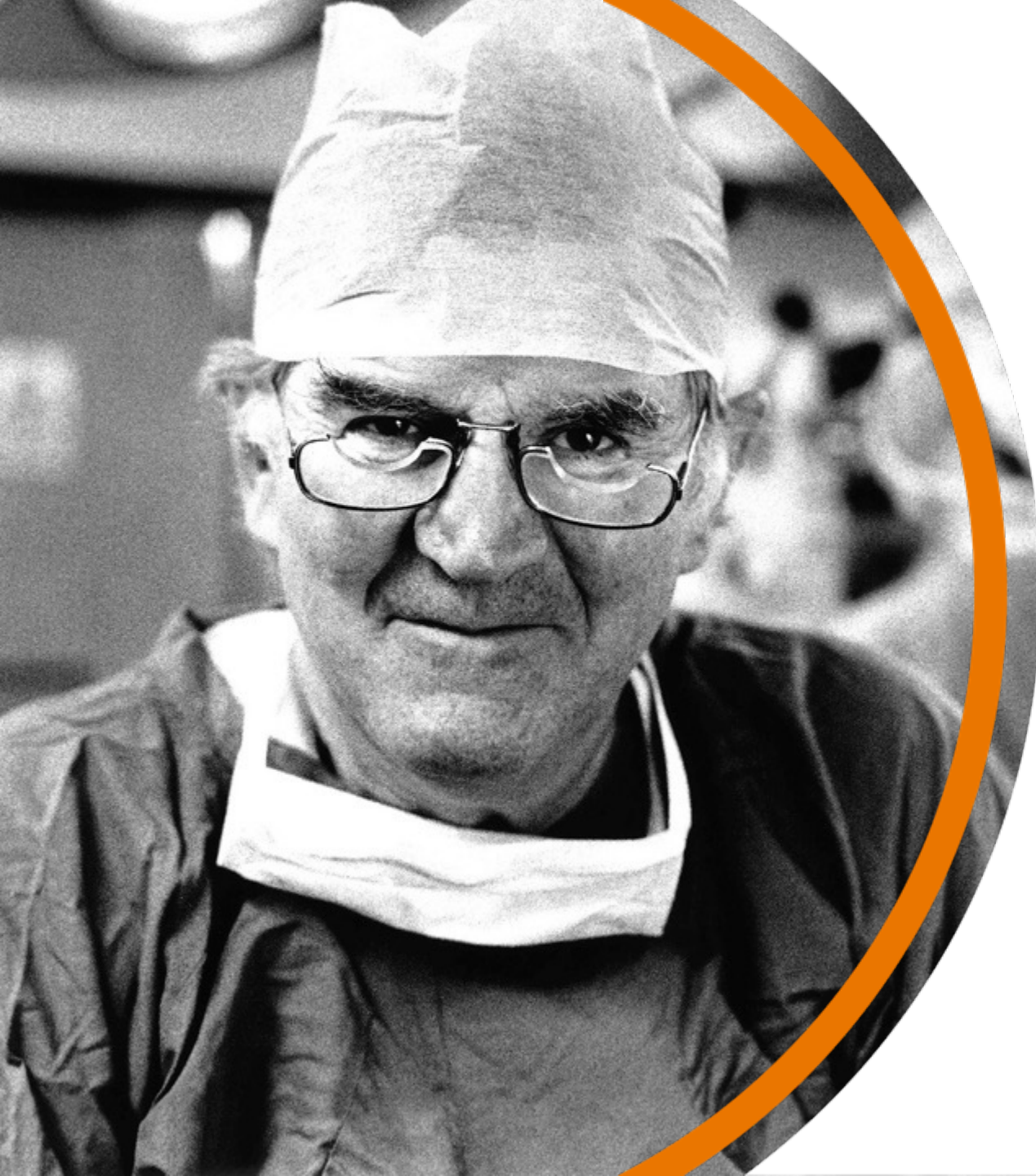
The programme treats 27,000 people for trachoma.

The National Trachoma Programme begins.



Fred meets Gabi.





"I believe the basic attribute of mankind is to look after one another."

Professor Fred Hollows (1929 – 1993)









don't need to be.



**RESTORE &
PRESERVE SIGHT**



**TRAIN & SUPPORT THE
REGIONAL EYE CARE WORKFORCE**



**STRENGTHEN LOCAL
HEALTH SYSTEMS**



**DRIVE INNOVATION
& RESEARCH**



**RESTORE &
PRESERVE SIGHT**



In the Pacific, The Foundation and its partners have supported:

Over 1.1 million consultations

Over 88,000 sight-saving surgeries

The opening of 7 eye clinics

Annual outreach plans

Common Eye Diseases & Disorders

Cataract

- Untreated cataract causes 88% of all blindness in Papua New Guinea

Diabetes Eye Disease

- Diabetes Eye Disease is a complication of diabetes and is the world's leading cause of blindness in the working age population.

Refractive error

- Globally, uncorrected refractive error is the main cause of vision impairment.





“Good eye service is
the right of everybody,
not just the wealthy
who can afford it.”

Professor Fred Hollows

NORMAL VISION



TARACTS

Diabetes and Diabetes Eye Disease

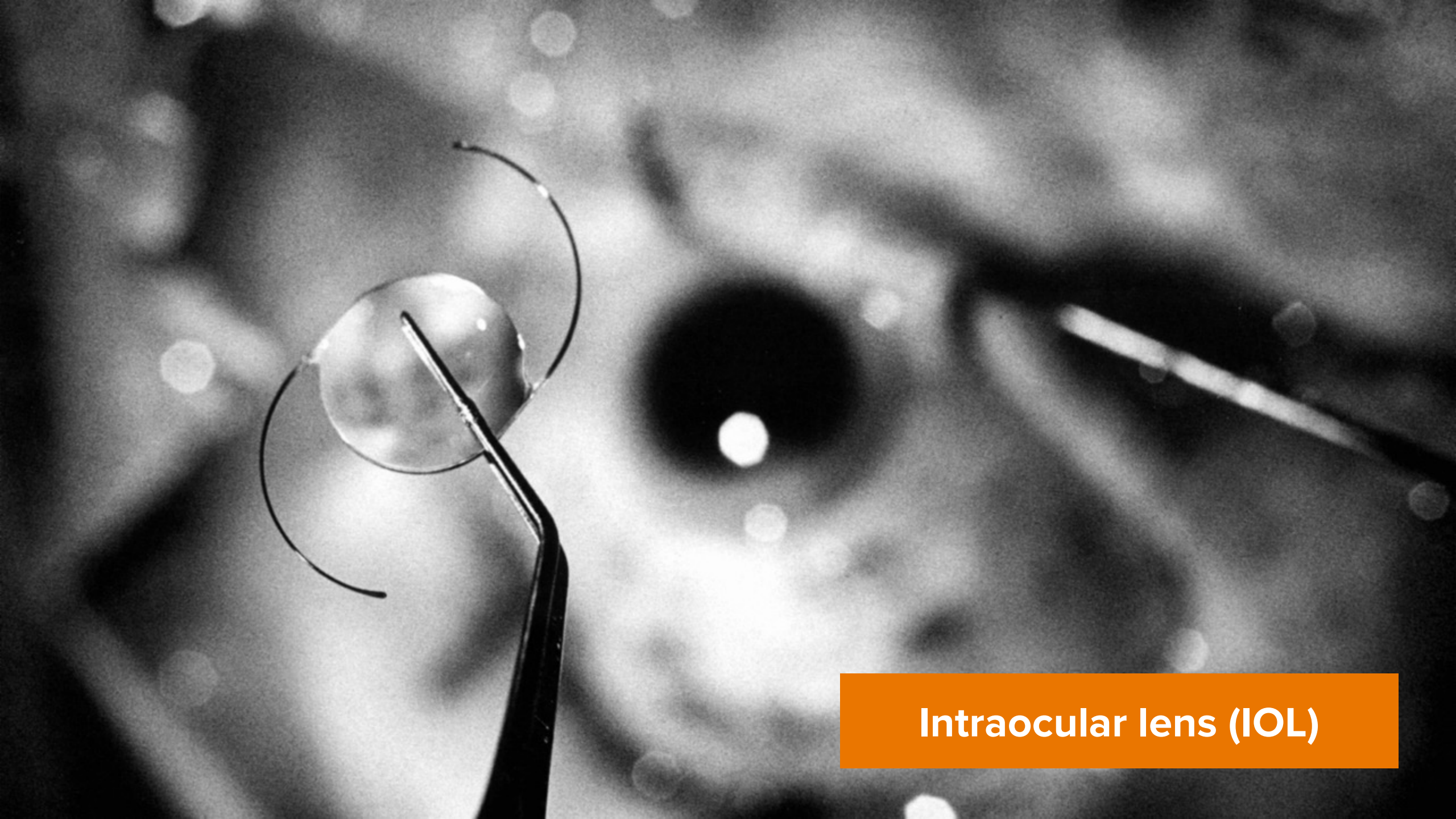
415 million people have diabetes

1 in 11 of the world's adult population

Pacific has the highest rate of diabetes

Uncommon a generation ago





Intraocular lens (IOL)

What a person with Diabetes Eye Disease might see







Pacific Eye Institute

A man in a blue and white striped shirt is pointing at a projected fundus image on a screen. The image shows a cross-section of a retina with a central yellow spot and a network of red and green vessels. The man is holding a pen in his left hand. In the foreground, a blurred face of a person is visible on the left, and a laptop and a water bottle are on a table in the center.

Diabetic Retinopathy Awareness Training



Refractive Error



Outreaches



Outreaches



**TRAIN & SUPPORT THE
REGIONAL EYE CARE WORKFORCE**



**“Teach the teachers
first, then the
teachers can teach
others.”**

Professor Fred Hollows



**STRENGTHEN LOCAL
HEALTH SYSTEMS**





**DRIVE INNOVATION
& RESEARCH**



FIJI[®]
WATER
FOUNDATION

FREE
EYE
CARE

BULA VINAKA!

MAI DIKEVI NA MATAMU
मुफ्त नेत्र जाँच

The Fred Hollows
Foundation NZ





Regional
Eye Centre
Solomon Islands



**In Papua New Guinea,
61% of the needlessly
blind are women.**





Sustainable Development Goals



- No Poverty
- Zero Hunger
- Good health and Well-being
- Quality Education
- Gender Equality
- Clean Water and Sanitation
- Decent Work and Economic Growth
- Decent Work and Economic Growth
- Reduce Inequality
- Sustainable Cities and Communities
- Responsible Consumptions and Productions
- Climate Action
- Partnerships for the Goals

The economic impact of sight:



**EVERY
DOLLAR**

you give to restore
someone's sight

IS
WORTH

**MORE
THAN 4x**

that to their
local economy







The **Fred Hollows**
Foundation NZ